

GE6512FF

PN: BTVGCFTEBACFFCW01B
EAN: 6422956013677

Specifications

Battery Model	GE6512FF
Voltage	12V
Power (1,65V/cell@15 min)	213 W/cell
Type	Valve regulated lead-acid (VRLA), 6 cell, GEL - maintenance free
Designed Floating Life	Up to 9 years (25° C)
Nominal Operating Temp. Range	25° C ± 3° C
Terminal	T6(M8)
Construction	
Container & Cover	ABS
Safety valve	EPDR
Terminal	Copper
Self Discharge (20°C)	3% of capacity declined per month
Capacity affected by temperature	
40°C	103%
25°C	100%
0°C	90%
Charge Voltage (25°C)	
Cycle use	13.5V~13.8V (-30mV/°C), max. Current: 19.5A
Float use	13.5V~13.8V (-20mV/°C)
Internal resistance	7.5mΩ
Physical	
Without Terminal	350 x 168 x 176 mm
With Terminal	350 x 168 x 176 mm
Product Weight	19.5 Kg



Completely sealed and maintenance-free



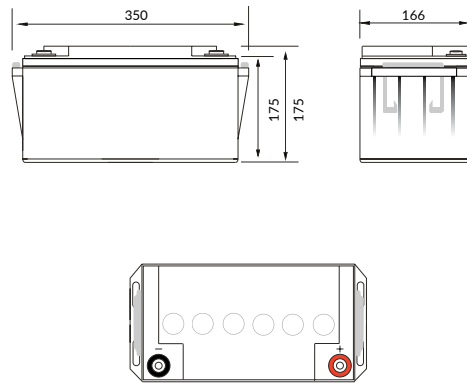
Excellent charging and re-charging



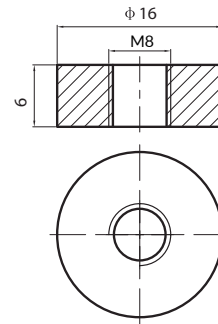
Long Life & low self-discharge design

- Gel deep cycle technology
- Excellent charging and re-charging
- Stable and reliable for long-term
- Low self-discharge
- Floating & standby use: up to 9 years
- More than 400 cycles at 100% DOD
- Multiple Application: Alarm and Security Systems, Cable Television, Communication Equipment, Power Tools, Control Equipment, Medical Equipment, UPS, Toys

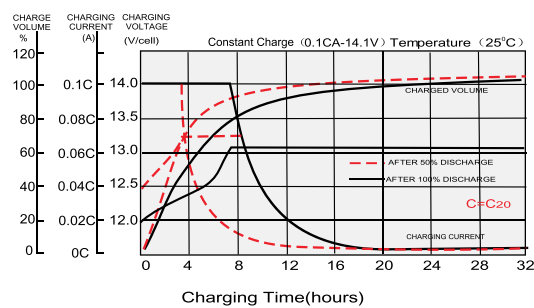
Dimensions (mm)



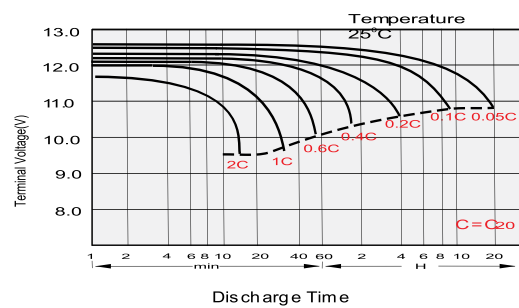
T6(M8) Terminal Dimensions (mm)



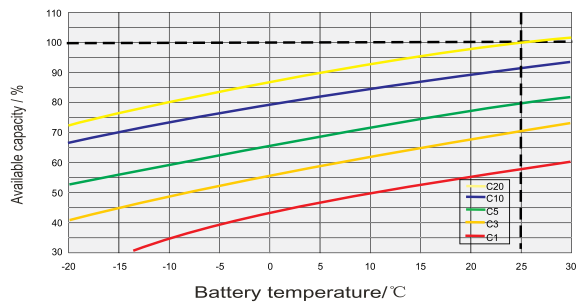
Float Charging Characteristics



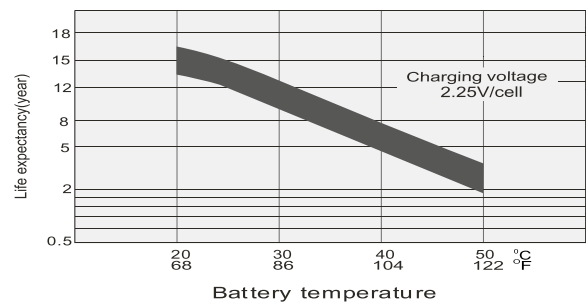
Discharge Characteristics



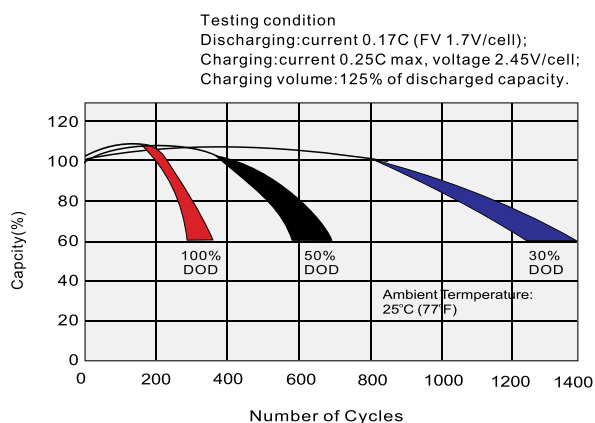
Temperature Effects in Relation to Battery Capacity



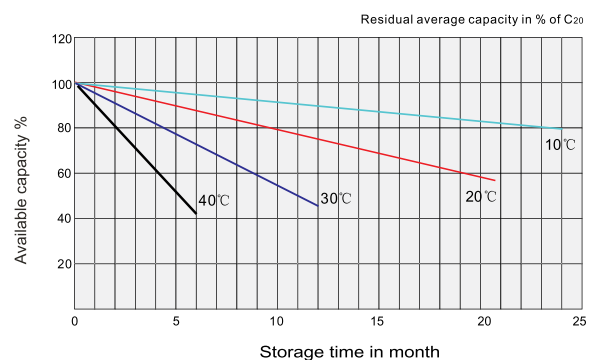
Effect of Temperature on Long Term Float Life



Cycle Life in Relation to Depth of Discharge



General Relation of Capacity VS. Storage Time





Constant Current Discharge Characteristics (A), 25°C

F.V/Ti	15min	30min	1Hr	2Hr	3Hr	5Hr	8Hr	10Hr	20Hr
1.85V/cell	93.9	62.6	38.4	22.7	16.4	11.0	7.45	6.31	3.42
1.80V/cell	105	68.5	41.5	24.0	17.5	11.5	7.77	6.50	3.48
1.75V/cell	113	71.7	42.6	24.4	17.6	11.8	7.83	6.57	3.50
1.70V/cell	117	72.3	43.2	24.8	17.8	12.0	7.90	6.63	3.51
1.65V/cell	119	73.6	43.5	25.0	18.0	12.1	7.96	6.70	3.53
1.60V/cell	123	74.8	43.8	25.1	18.2	12.2	8.03	6.76	3.55



Constant Wattage Discharge Characteristics (W), 25°C

F.V/Ti	15min	30min	1Hr	2Hr	3Hr	5Hr	8Hr	10Hr	20Hr
1.85V/cell	177	120	74.5	44.7	32.0	21.5	14.6	12.3	6.83
1.80V/cell	198	130	72.6	46.8	33.7	22.5	15.2	12.5	6.89
1.75V/cell	209	134	73.1	46.9	33.8	22.7	15.3	12.6	6.92
1.70V/cell	210	134	81.5	47.1	34.0	22.9	15.4	12.7	6.96
1.65V/cell	213	134	82.1	47.3	34.2	23.1	15.5	12.9	6.99
1.60V/cell	217	135	82.7	47.5	34.7	23.2	15.6	13.0	7.02



Logistics



Carton Box Size 360 x 174 x 205 mm



Pieces in the Carton Box 1 pc / ctn



Net & Gross weight / CTN N.W. / G.W.: 19.5 kg / 20 kg

