

## GE20012KF

PN: BTVGCBHOEIEKFCW01B  
EAN: 6422956013455

### Specifications

Battery Model	GE20012KF
Voltage	12V
Power (1.65V/cell@15min)	595 W/cell
Type	Valve regulated lead-acid (VRLA), 6 cell, GEL - maintenance free
Designed Floating Life	Up to 9 years (25°C)
Nominal Operating Temp. Range	25°C ± 3°C
Terminal	T11 (M8 bolt)
<b>Construction</b>	
Container & Cover	ABS
Safety valve	EPDR
Terminal	Copper
Self Discharge (25°C)	after 3 month storage 92% after 6 month storage 84%
<b>Capacity affected by temperature</b>	
40°C	103%
25°C	100%
0°C	90%
<b>Charge Voltage (25°C)</b>	
Cycle use	13.5V~13.8V max. Current: 60A
Float use	13.5V~13.8V
Internal resistance	≤ 4.0mΩ
<b>Physical</b>	
Without Terminal	522 x 240 x 216 mm
With Terminal	522 x 240 x 240 mm
Product Weight	56.5 kg



Completely sealed and maintenance-free



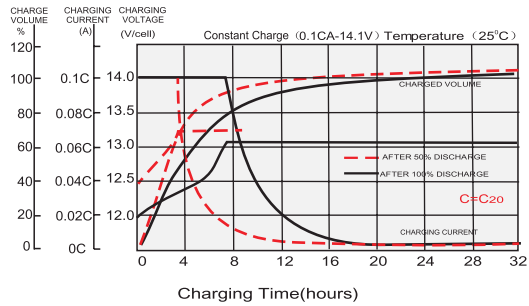
Excellent charging and re-charging



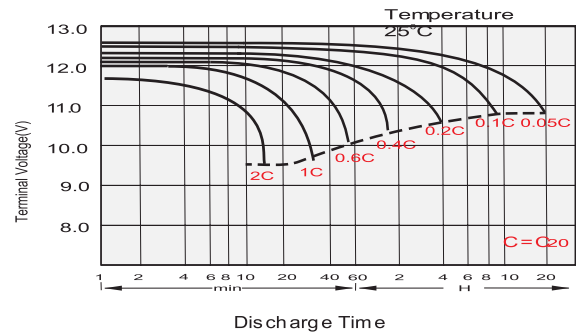
Long Life & low self-discharge design

- Gel deep cycle technology
- Excellent charging and re-charging
- Stable and reliable for long-term
- Low self-discharge
- Floating & standby use: up to 9 years
- More than 400 cycles at 100% DOD
- Multiple Application: Alarm and Security Systems, Cable Television, Communication Equipment, Power Tools, Control Equipment, Medical Equipment, UPS, Toys, Solar Systems

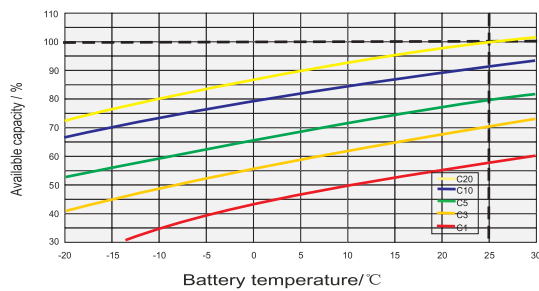
## Constant voltage charging characteristic (0.25 CA, at 25° C)



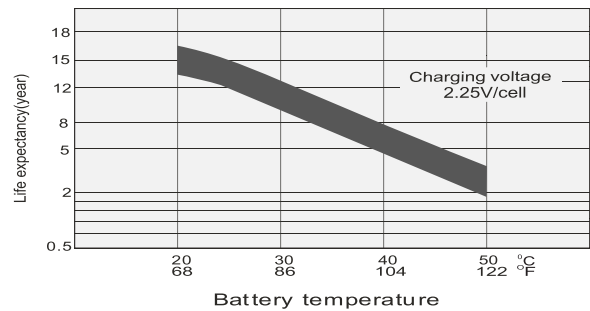
## Discharge Characteristics



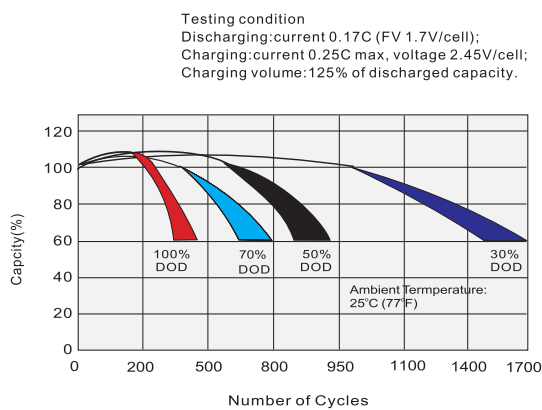
## Temperature Effects in Relation to Battery Capacity



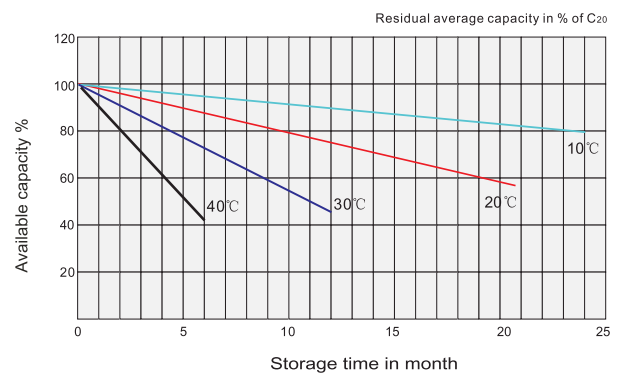
## Effect of Temperature on Long Term Float Life



## Cycle Life in Relation to Depth of Discharge

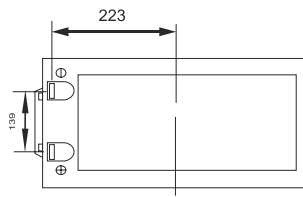
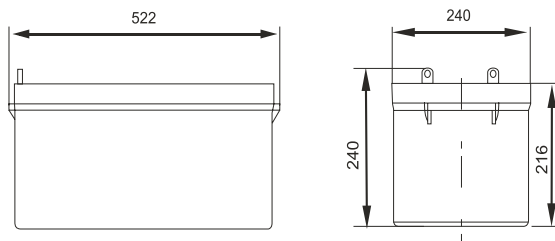


## Self Discharge Characteristics

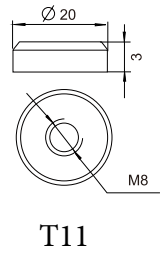
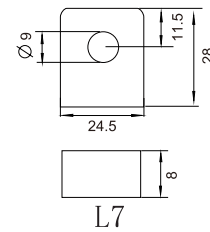


## Dimensions (mm)

## M8 Terminal Dimensions (mm)



### Terminal Unit: mm [inches]



## Constant Current Discharge Characteristics (A), 25°C

F.V/Ti	15min	30min	60min	2Hr	3Hr	5Hr	8h	10Hr	20Hr
1.80V/cell	264	179	108	63.7	50.7	34.0	23.9	20.0	10.5
1.75V/cell	298	188	111	64.4	52.1	35.0	24.1	20.2	10.6
1.70V/cell	319	197	113	68.2	54.0	35.8	24.8	20.4	10.8
1.65V/cell	337	206	119	70.8	55.0	36.8	25.3	20.6	10.9
1.60V/cell	359	215	125	73.2	56.6	37.6	25.7	20.8	10.9



## Constant Wattage Discharge Characteristics (W), 25°C

F.V/Ti	15min	30min	60min	2Hr	3Hr	5Hr	8Hr	10Hr	20Hr
1.80V/cell	498	341	204	124	98.4	69.2	46.6	38.4	21.2
1.75V/cell	533	352	210	128	100	70.0	47.0	38.8	21.3
1.70V/cell	567	363	218	131	103	70.4	47.4	39.2	21.4
1.65V/cell	595	378	223	136	105	71.0	47.6	39.6	21.5
1.60V/cell	610	389	230	140	108	71.3	48.0	40.0	21.6



## Logistics

Carton Box Size	530 x 250 x 277 mm
Pieces in the Carton Box	1 pc / ctn
Net & Gross weight / CTN	N.W. / G.W.: 56.5 kg / 59 kg

